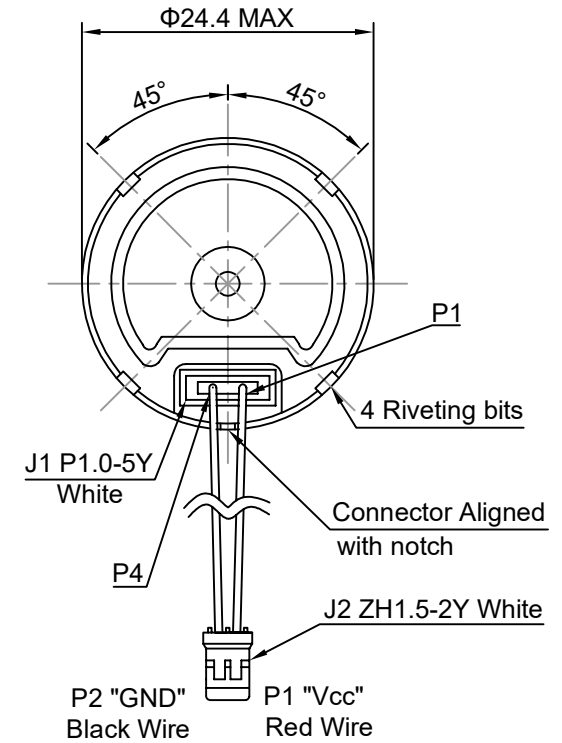
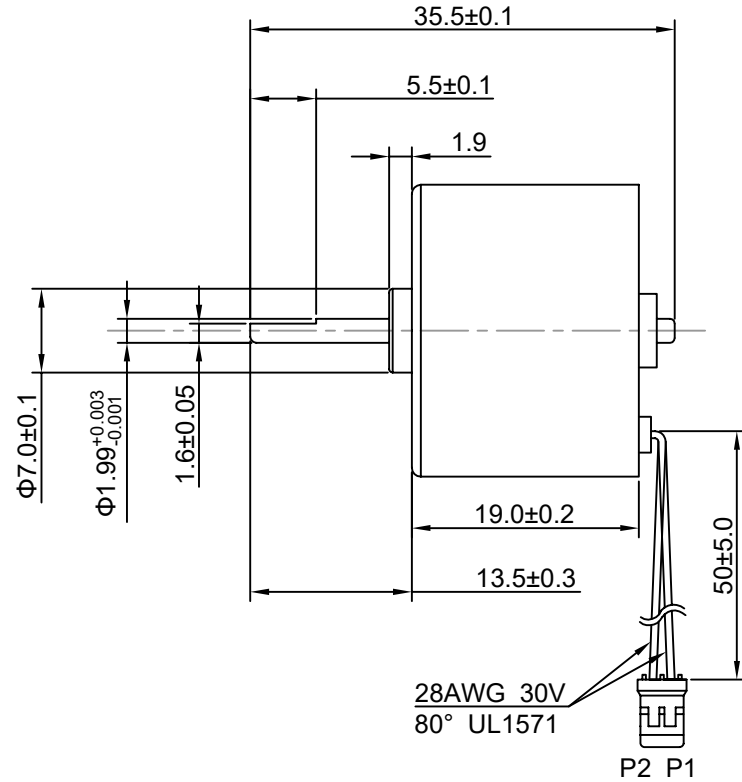
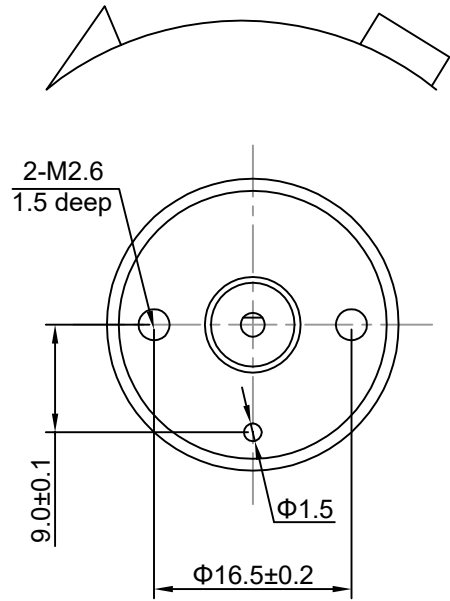


Direction of Rotation

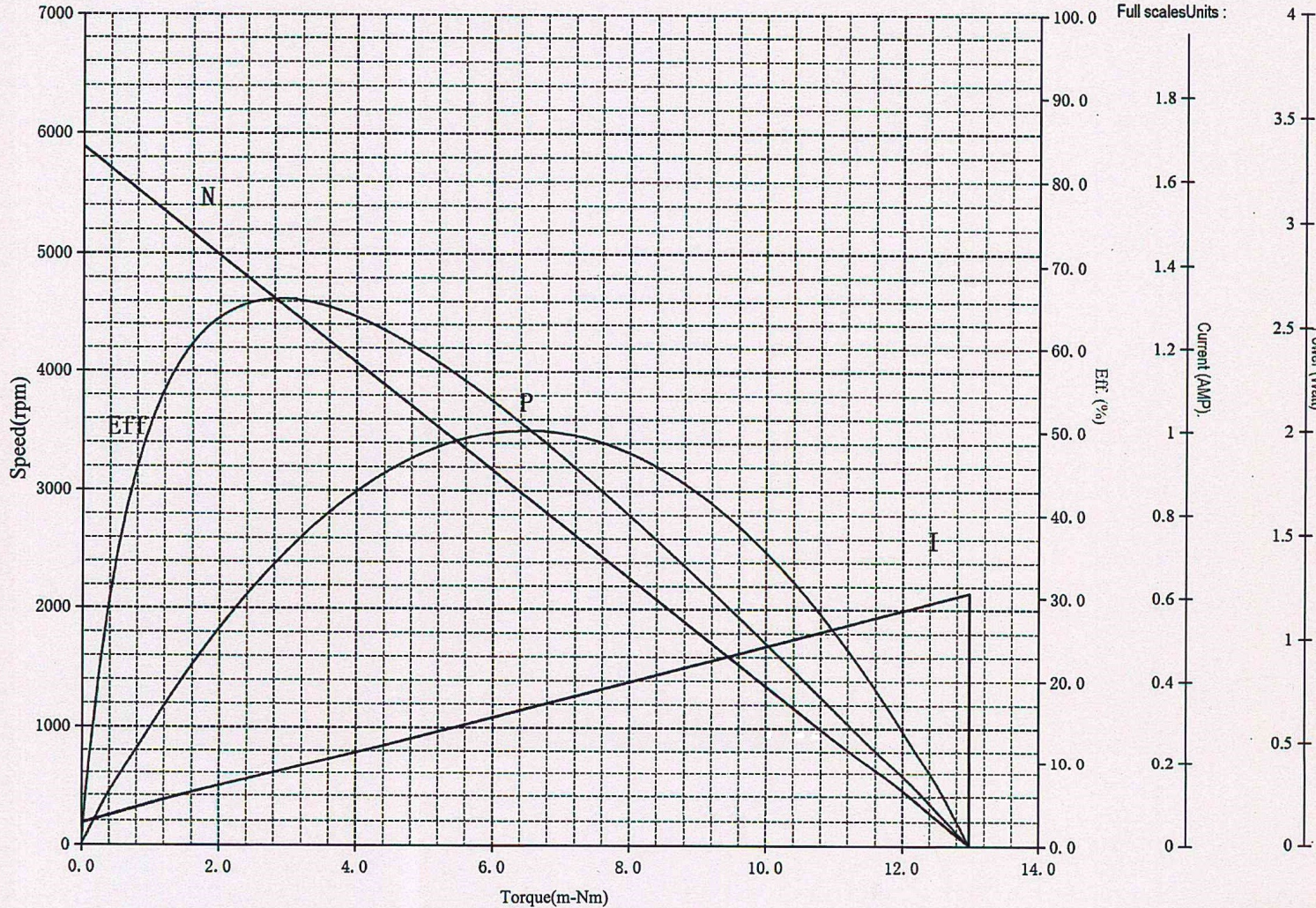


No.	Item	Specification	No.	Item	Specification
1	Rated Voltage	12V DC	7	Rated Load	20g.cm
2	Voltage Range	8-15.0V DC	8	Shaft end play	0.3mm Max
3	No Load Current	0.12A Max	9	Terminal Resistance	12.4±1.86ohm
4	No Load Speed	6000±10%RPM	10	Stall Current	0.611A Max
5	Rated Load Current	0.14A Max	11	Stall Torque	130g.cm
6	Rated Load Speed	5000±10%RPM			

Drawn	Tony	04/15/2026	Unit: mm	
Checked	Eva	04/15/2026	Kysan Electronics www.kysanelectronics.com	
Eng Appr.				
Mfg Appr.				
Q.A.				
SKU: 1025128			Siae: A4	Weight(Kg):
			Scale	

SKU: 1025128

Date: 04/15/26



Performance (In an ambient temperature of 25 -30 C)
 Motor tested rapidly to prevent significant temperature rise.

At a constant voltage of **12.00** Volts
 With a circuit resistance **0.000** Ohms

AT No Load	
Speed :	5890 Rpm
Current:	0.050 Amp
At stall (Extrapolated)	
Torque :	12.984 m-Nm
Current:	0.611 Amp
At maximum efficiency	
Efficiency :	65.95 %
Torque :	2.892 m-Nm
Speed :	4578 Rpm
Current :	0.175 Amp
Output :	1.386 Watts
At maximum power	
Torque :	6.492 m-Nm
Speed :	2945 Rpm
Current :	0.331 Amp
Output :	2.002 Watts

Characteristics	
Torque Constant :	23.137 m-Nm/Amp
E.M.F Constant :	23.137 mV/rad/sec
Dy. Resistance :	19.627 Ohms
Motor Regulation:	453.619 Rpm/m-Nm

Calculation	
At Torque Level:	1.962 m-Nm
Speed :	5000 Rpm
Current :	0.135 Amp
Efficiency :	63.41 %
Output :	1.027 Watts

COMPUTER PRINT-OUT
 NOMINAL MOTOR CURVES.
 Performance and characteristics are
 measured based on limited motor
 samples only.