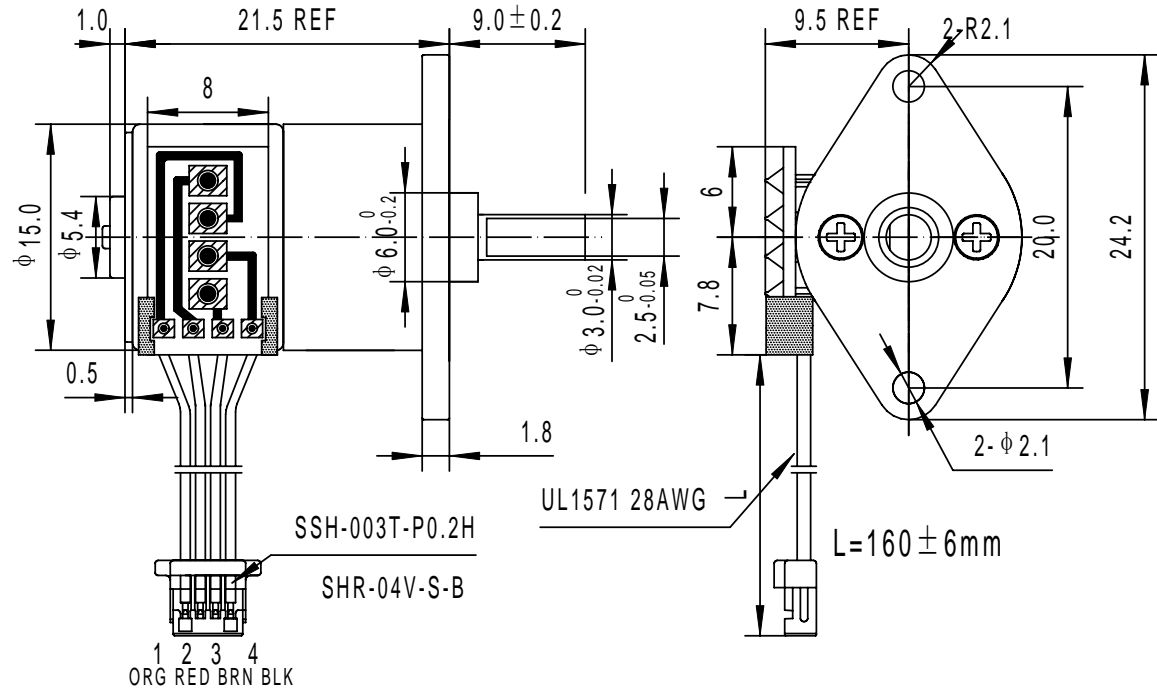


ITEM	Specification Condition
NO. of Phase	2
Step Angle	18° /110
Operating Voltage	DC 5V (Terminal Voltage)
Excitation	2-2 Phase Excitation.
Inductance	3.0±25% mH
Winding Resistance	10±7% Ω At 25℃
Pull-out Torque	500g.cm Min ,800pps DC 5V 25℃
Pull in Rate	1000pps Min, DC5V 25℃ 2- 2
Pull Out Rate	1700pps Min ,DC5V 25℃ 2- 2
Insulation Class	Class E
Temperature	105 ℃ Max
Moderating Ratio	1/110
Peak Current Rating (Each Winding)	250 mA

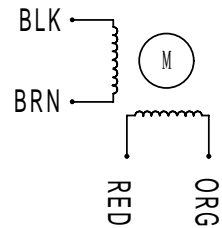
GM12-15BY-001 MOTOR



Attention: Don't touch the PCB and lead wire when take motor out!

Pin No.	CCW			
1 ORG	-	-	+	+
2 RED	+	+	-	-
3 BRN	-	+	+	-
4 BLK	+	-	-	+

CW ←



Dwg. NO: 10-12-110-01	Customer No:	Drafted By:	
		Checked By:	
Date: 2010.12.20	Date: 2010.12.20	Approved By:	
		Scale: 2:1	Units: mm
		Angular: =1° Decimal: X.XX ±0.05 X.X ±0.2 X ±0.3	

