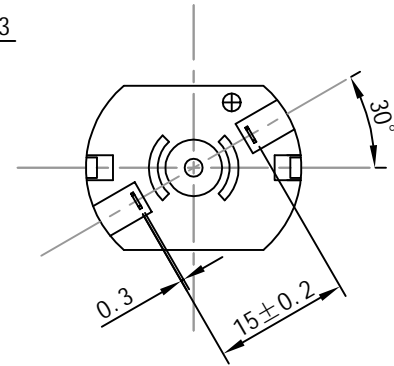
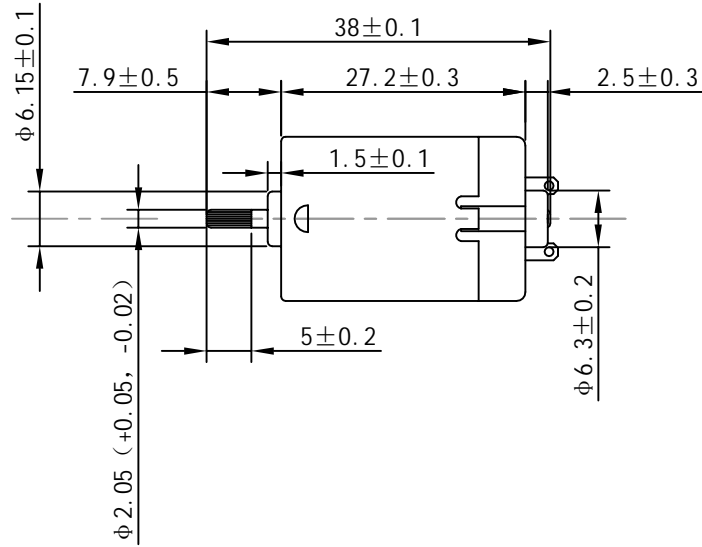
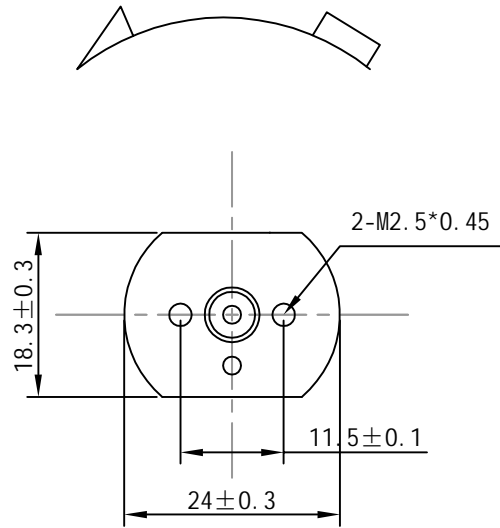


Direction of Rotation



No.	Item	Specification	No.	Item	Specification
1	Rated Voltage	12V DC	7	Stall Current	≤ 5.5A
2	Rated Load	20g. cm	8	Stall Torque	≥ 160g. cm
3	No Load Current	≤ 290mA	9	Direction of Rotation	CCW
4	No Load Speed	20000 ± 3000RPM	10		
5	Rated Load Current	≤ 690mA	11		
6	Rated Load Speed	17300 ± 10%RPM			

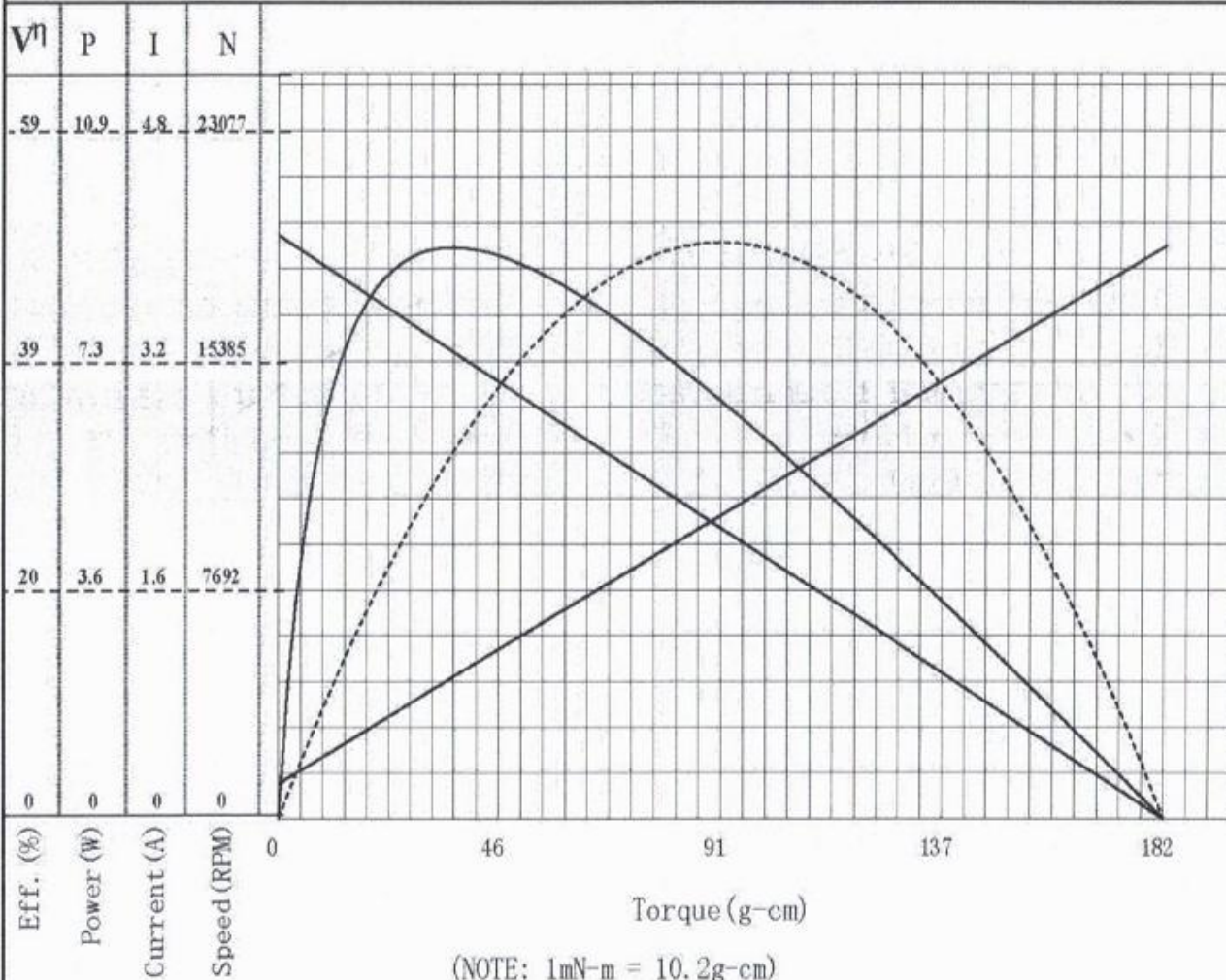
Drawn	Bruce	05/17/2023	Unit: mm		
Checked	Eva	05/17/2023	Kysan Electronics www.kysanelectronics.com		
Eng Appr.					
Mfg Appr.					
Q.A.					
SKU: 1112466			Size :A4	Weight(Kg):	
			Scale :		

Sample No: 0 Customer Date:

Model: **1112466** Efficiency
 ----- Power output

NOTE: Performance (in an ambient temperature of 25-30°C)

Motor tested rapidly to prevent significant temperature rise.



(NOTE: 1mN-m = 10.2g-cm)

Constant voltage : 12.0 V_{dc}
 Direction: CCW

At No Load

Speed: 19584 rpm
 Current: 0.244 A

At stall (Extrapolated)

Torque: 182.0 g-cm
 Current: 4.01 A

At maximum efficiency

Efficiency: 48.9 %
 Torque: 36.4 g-cm
 Speed: 15667 rpm

Current: 1.00 A
 Output: 5.85 W

At maximum Power output

Output: 9.14 W
 Torque: 91.0 g-cm
 Speed: 9792 rpm
 Current: 2.13 A

Issued by QA Reliability Testing Center

COMPUTER PRINT-OUT

NOMINAL MOTOR CURVES

Performance and characteristics are measured based on limited motor samples only